



## Recent Measures for your Event at our Location:

- + immediate Parking Spots in the area of the locations, **Parking Management** (in coordination with the local car park company)
- + sustainable and low contact forms of mobility
- + intelligent **Crowd-Management**, safe and purposeful visitor guidance (i. A. information boards, announcements, security staff)
- + contactless Check-In on-site
- + **Sluice Situation**, generous entrance area for different time frames with sufficient distance
- + **Fulfillment of Hygiene Standards** through comprehensive disinfection measures (i.A. disinfectant dispensers, intensified cleaning of the halls, surfaces and sanitary facilities)
- + **Adequate Seating Variations** (to reduce the person density / minimize the contact risk)
- + **Safety Announcements possible** (during breaks; when required: in critic situations)
- + **Digital Formats and Techniques** as peripheral presentation options (live streaming, video-conferences, virtual/augmented reality, hologram-presentations)
- + **Fulfillment of highest Hygiene Standards** regarding Catering (i.A. spit protection at the serving stations, mask required for the staff, minimum distance rules, short waiting periods)
- + **Minimized and pre-portioned Food Service** for individual attendees in snack boxes, food jars or similar

*+++ NOTE: The current and future decrees and specifications on the part of the authority are decisive. +++*

# Frankfurter Hof Great Hall

**FRANKFURTER  
HOF  
MAINZ**

## Seating Capacity in Compliance with Minimum Distance:

- + Individual Seating: 64 Persons
- + Parliamentary: 46 Persons
- + Tish Sets: 42 Persons



### Great Hall

540 m<sup>2</sup> Floor Space incl.  
Gallery und Empore

18,0 m Length

11,0 m Width

7,0 m Height

Measurements Showcase

Stage:

10,0 m Length x 5,0 m

Depth

1,0 m Height

Daylight (darkening  
possible)

Bright Parquet Floor



## Contact for Inquiries:

- + Philipp Geusendam  
Sales Director

# Frankfurter Hof Great Hall



---

Tel.: 06131 242-140

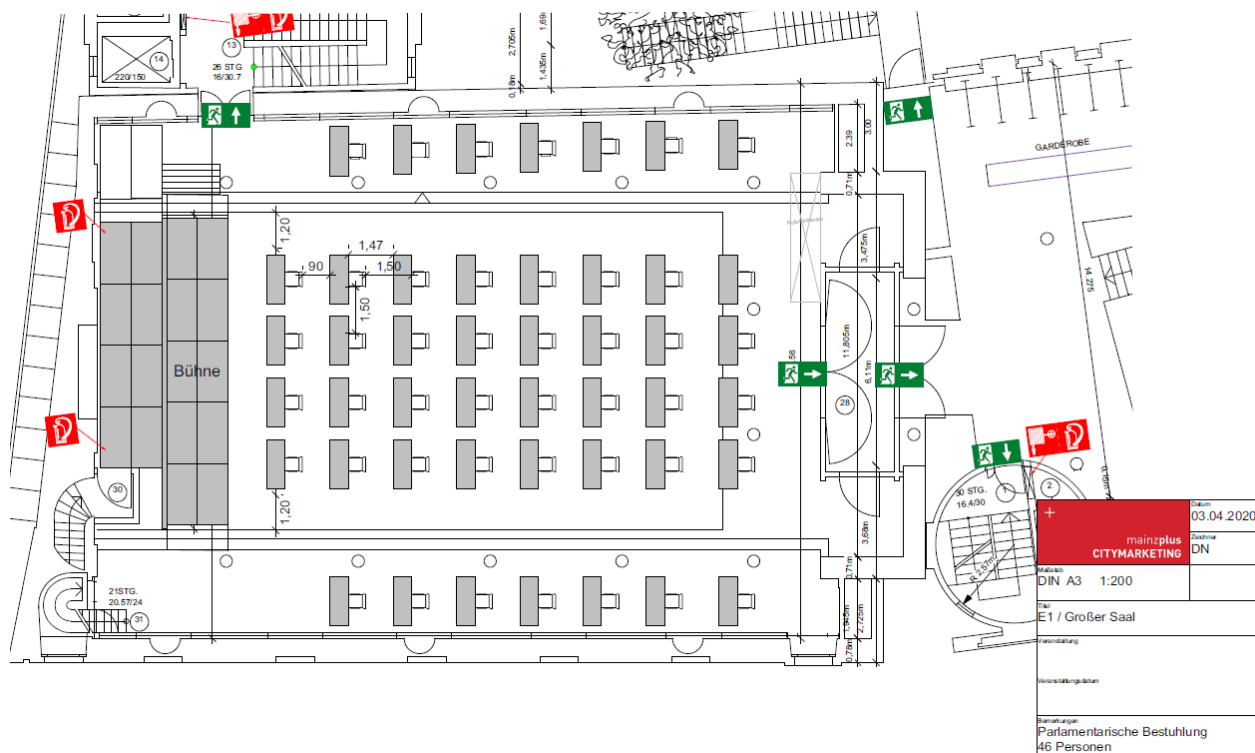
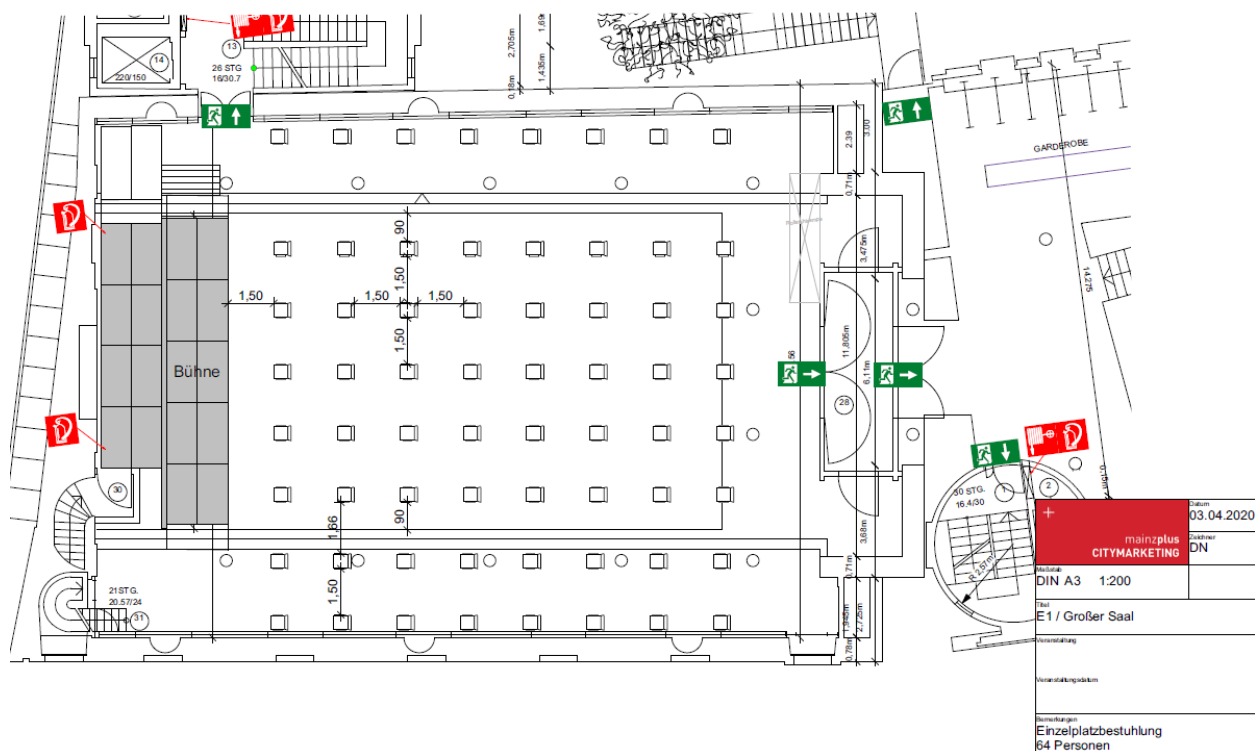
Mail: [p.geusendam@mainzplus.com](mailto:p.geusendam@mainzplus.com)

# Frankfurter Hof Great Hall



## Seating Variations Great Hall:

+++ NOTE: The current and future decrees and specifications on the part of the authority are decisive. +++



# Frankfurter Hof Great Hall



## Seating Variations Great Hall:

+++ NOTE: The current and future decrees and specifications on the part of the authority are decisive. +++

