

# Electoral Palace Great Hall (1<sup>st</sup> Floor)



eventsplus  
MAINZ CONGRESS



## Recent Measures for your Event at our Location:

- + immediate Parking Spots in the area of the locations, **Parking Management** (in coordination with the local car park company)
- + sustainable and low contact forms of mobility
- + intelligent **Crowd-Management**, safe and purposeful visitor guidance (i. A. information boards, announcements, security staff)
- + contactless Check-In on-site
- + **Sluice Situation**, generous entrance area for different time frames with sufficient distance
- + **Fulfillment of Hygiene Standards** through comprehensive disinfection measures (i.A. disinfectant dispensers, intensified cleaning of the halls, surfaces and sanitary facilities)
- + **Adequate Seating Variations** (to reduce the person density / minimize the contact risk)
- + **Safety Announcements possible** (during breaks; when required: in critic situations)
- + **Digital Formats and Techniques** as peripheral presentation options (live streaming, video-conferences, virtual/augmented reality, hologram-presentations)
- + **Fulfillment of highest Hygiene Standards** regarding Catering (i.A. spit protection at the serving stations, mask required for the staff, minimum distance rules, short waiting periods)
- + **Minimized and pre-portioned Food Service** for individual attendees in snack boxes, food jars or similar

+++ NOTE: The current and future decrees and specifications on the part of the authority are decisive. +++

# Electoral Palace Great Hall (1<sup>st</sup> Floor)



eventsplus  
MAINZ CONGRESS

## Great Hall

590 m<sup>2</sup> Floor Space

28,4m Length  
15,2m Width  
11,6m Height

Daylight (darkening possible)  
Wooden Parquet

### **Capacity in Compliance with Minimum Distance:**

Row: 84  
Parliamentary: 69  
Table Sets: 69

## Empore

(im Zwischengeschoss)

15,3m Length  
4,9m Width  
2,2m Height

Daylight (darkening possible)  
Wooden Parquet

### **Capacity in Compliance with Minimum Distance:**

Row: 16

## Gallery

(im 2.Obergeschoss)

15,7m Length  
4,7m Width  
5,7m Height

Daylight (darkening possible)  
Wooden Parquet

### **Capacity in Compliance with Minimum Distance:**

Row: 25



### **Contact for Inquiries:**

+ Philipp Geusendam  
Sales Director  
Tel.: 06131 242-140  
Mail: [p.geusendam@mainzplus.com](mailto:p.geusendam@mainzplus.com)

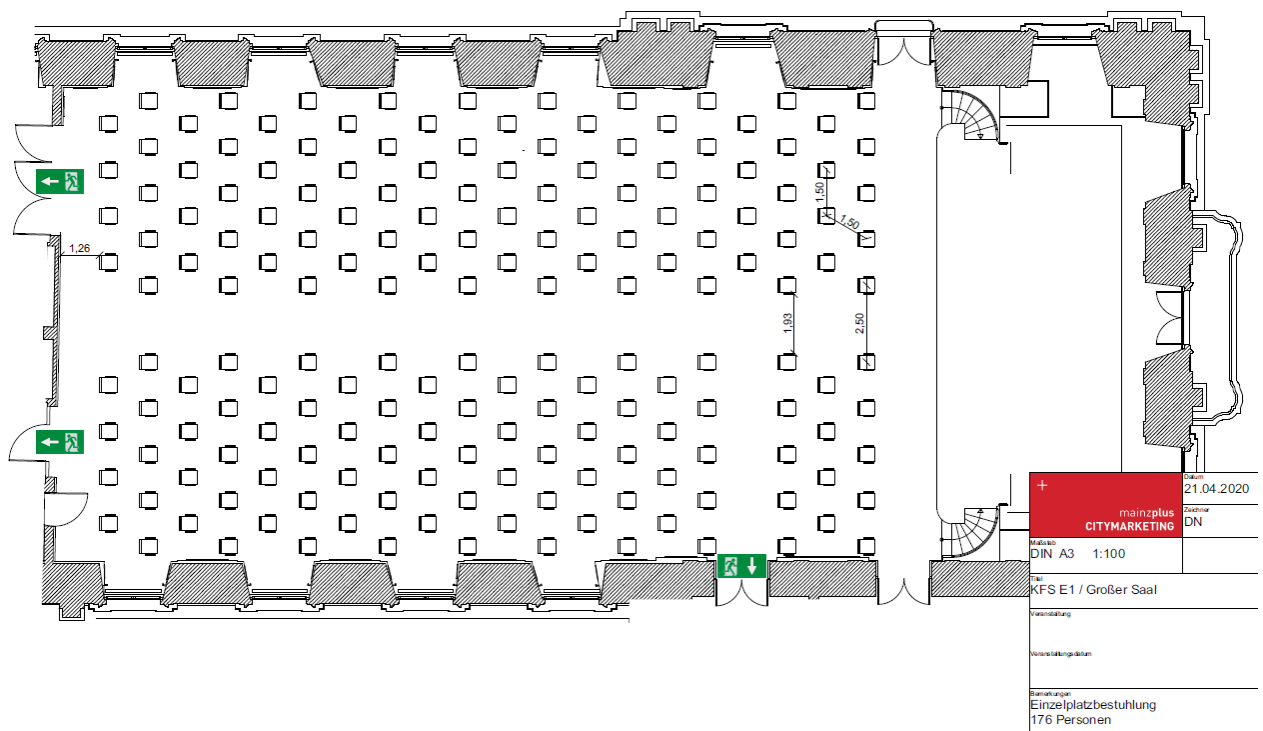
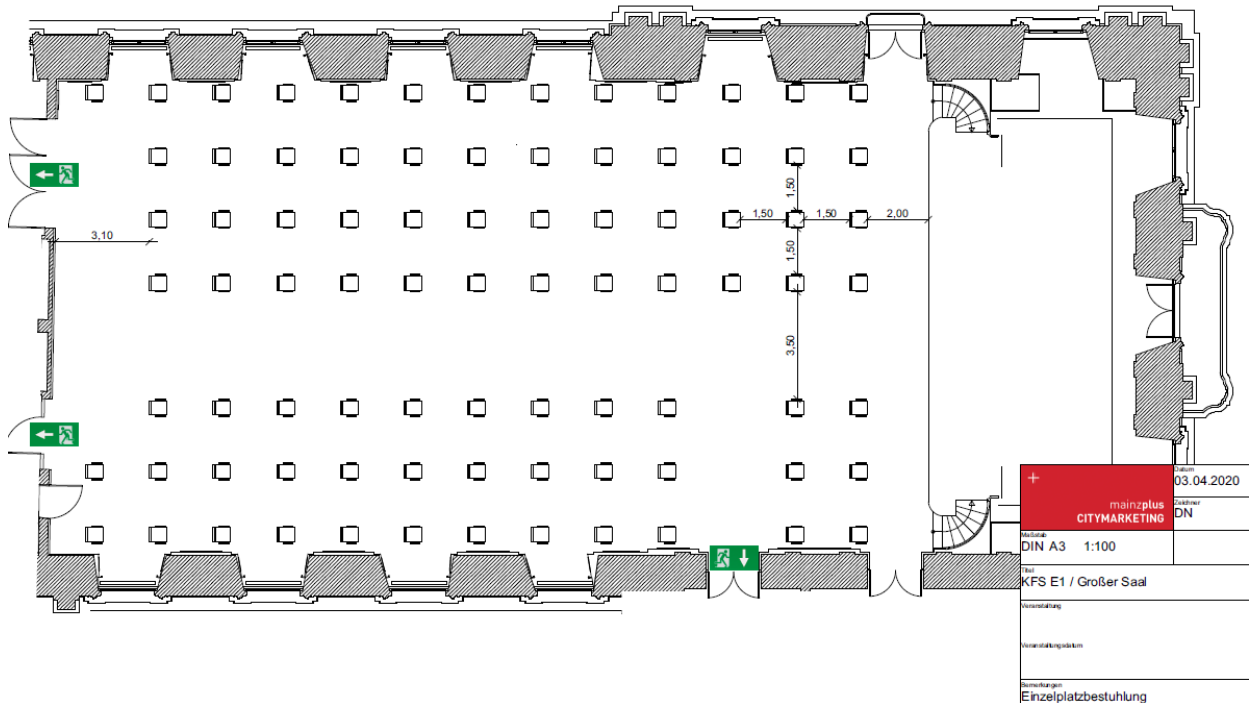


# Electoral Palace Great Hall (1<sup>st</sup> Floor)



## Seating Variations Great Hall:

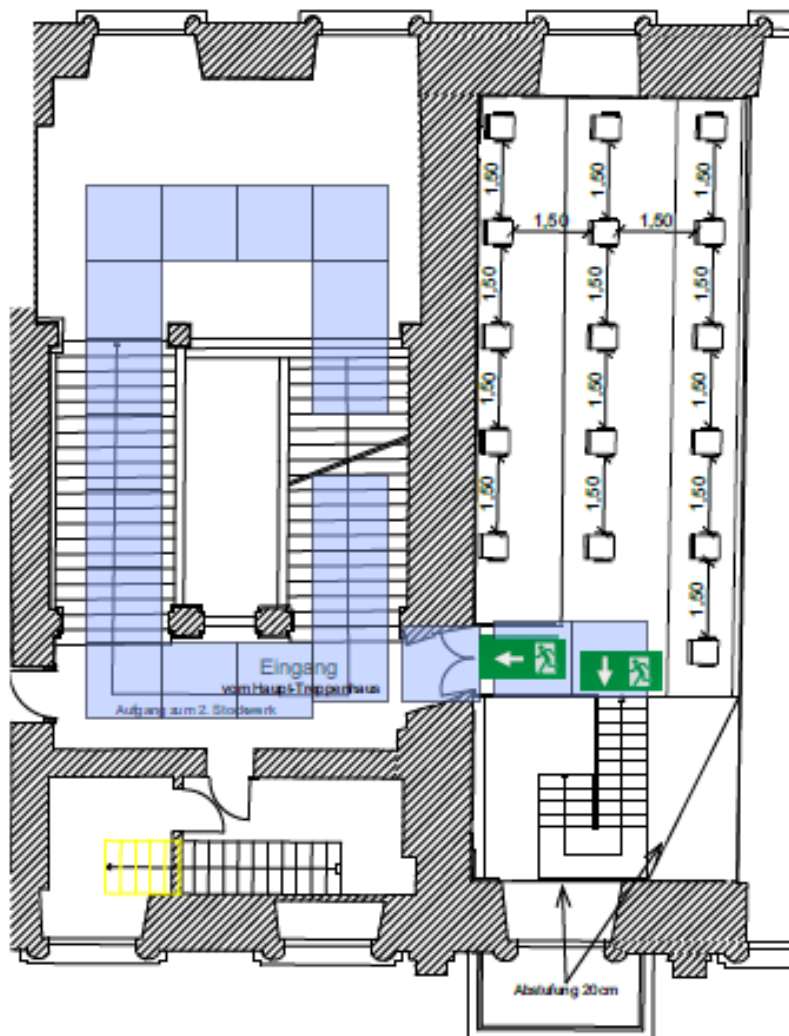
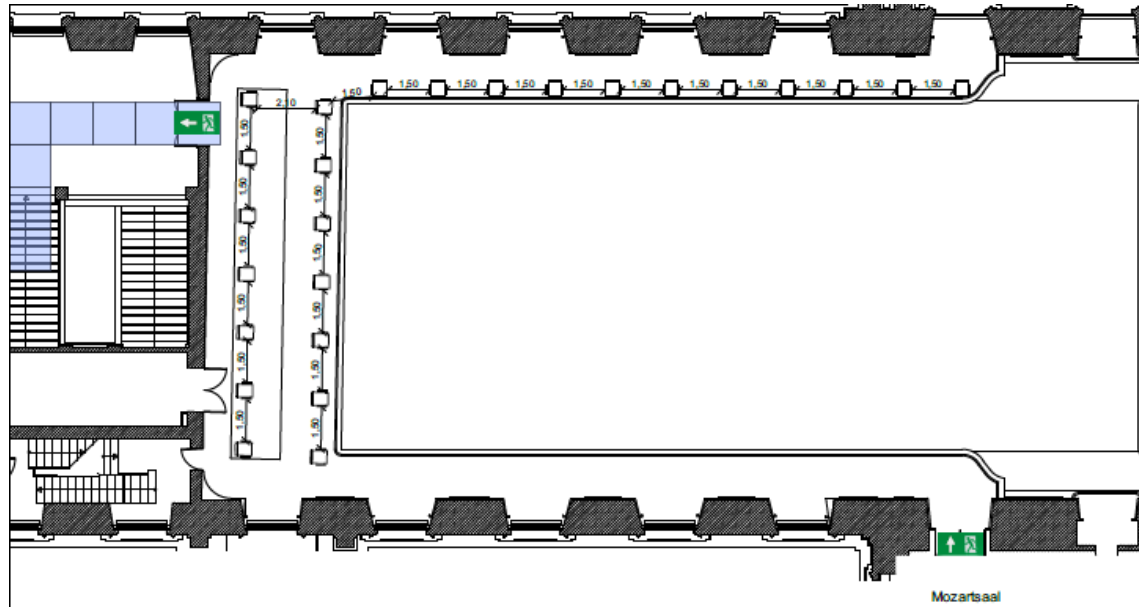
+++ NOTE: The current and future decrees and specifications on the part of the authority are decisive. +++



# Electoral Palace Great Hall (1<sup>st</sup> Floor)



## Seating Variations Empore und Gallery:





# Electoral Palace Great Hall (1<sup>st</sup> Floor)



## Seating Variations Great Hall:

+++ NOTE: The current and future decrees and specifications on the part of the authority are decisive. +++

