

# ground floor

## Electoral Palace



eventsplus  
MAINZ CONGRESS



### Leibnizsaal

160 m<sup>2</sup> surface area

14,9m long  
9,0m wide  
5,5m high

natural light  
darkening available  
parquet floor

#### **capacity:**

in rows: 140  
classroom style: 72  
bankett style: 100

### Ausstellungssaal

140 m<sup>2</sup> surface area

18,30m long  
6,79m wide  
5,75m high

natural light  
darkening available  
parquet floor

#### **capacity:**

in rows: 142  
classroom style: 54  
bankett style: 90

### Gewölbesaal

479 m<sup>2</sup> surface area

28,6m long  
14,9m wide  
5,47m high

natural light  
stone floor

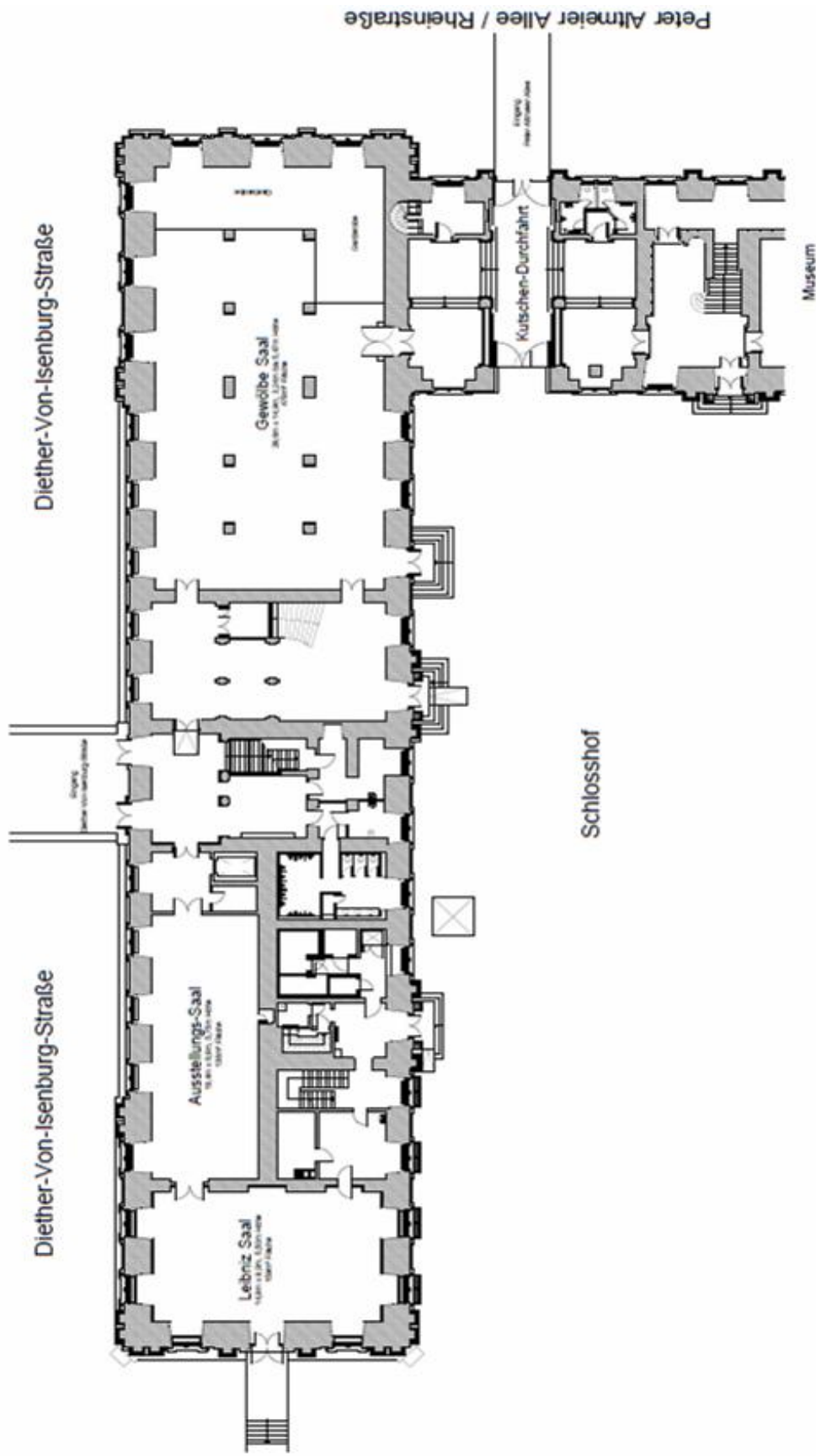
#### **Applies all rooms:**

- + broadband and wireless LAN
- + ISDN/Analog/Fax available
- + electric and water connection available
- + platform stage available
- + light can be dimmed by chandelier
- + barrier-free entry to toilets

# ground floor Electoral Palace



eventsplus  
MAINZ CONGRESS



# 1st floor Electoral Palace



eventsplus  
MAINZ CONGRESS



## Spiegelsaal

160m<sup>2</sup> surface area

15,3m long  
9,4m wide  
5,6m high

natural light  
darkening available  
parquet floor

### **capacity:**

in rows: 147  
classroom style: 72  
bankett style: 100

## Restaurant

155 m<sup>2</sup> surface area

19,4m long  
7,1m wide  
5,6m high

natural light  
darkening available  
parquet floor

channel to Spiegelsaal  
catering area

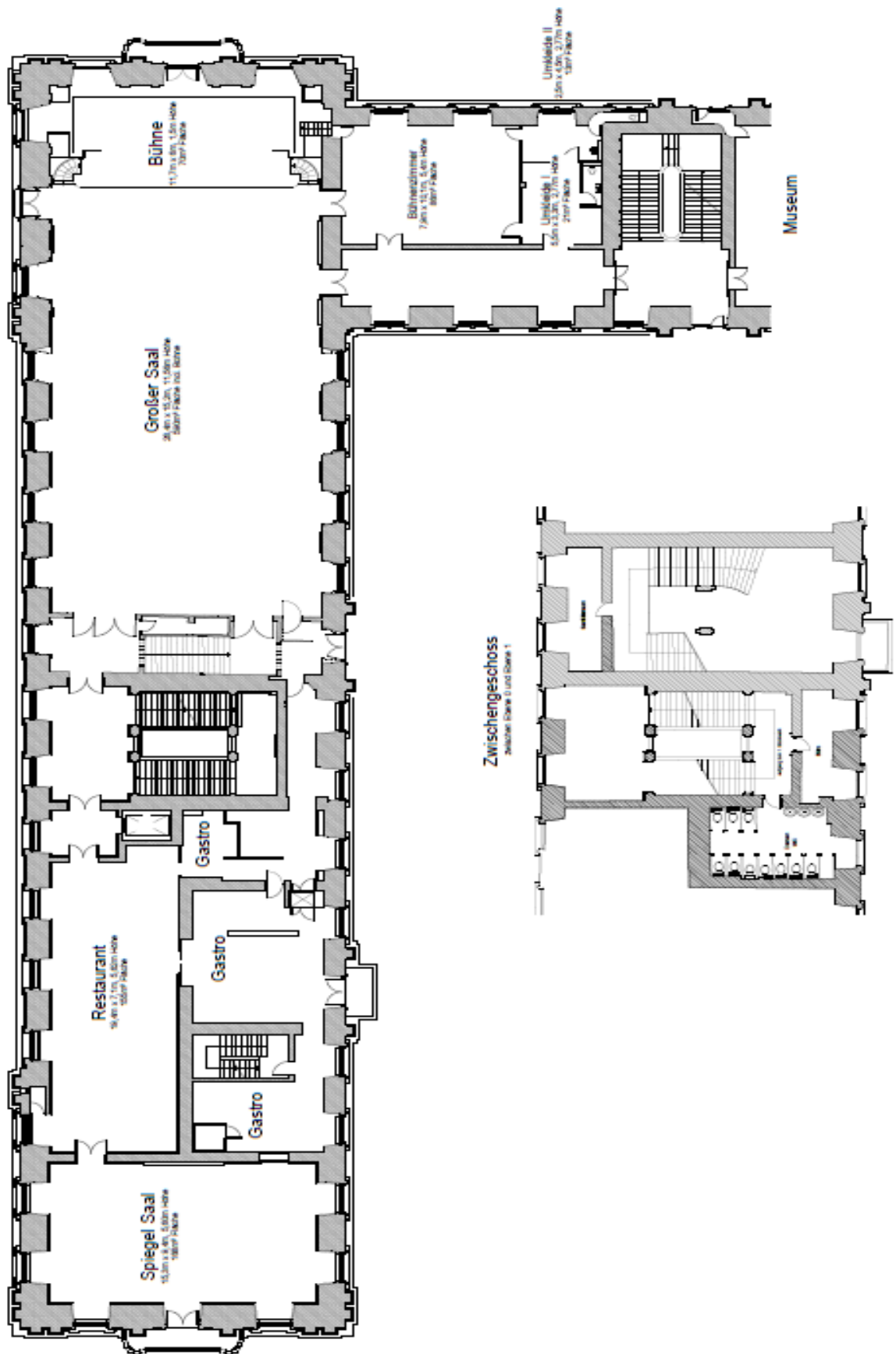
### **Applies to both rooms:**

- + broadband and wireless LAN
- + ISDN/Analog/Fax available
- + electric and water connection available

# 1st floor Electoral Palace

+

eventsplus  
MAINZ CONGRESS



# Großer Saal (1st floor) Electoral Palace



eventsplus  
MAINZ CONGRESS



## Großer Saal

590 m<sup>2</sup> surface area

28,4m long  
15,2m wide  
11,6m high

natural light  
darkening available  
parquet floor

### **capacity:**

in rows: 600  
classroom style: 297  
bankett style: 350

## Empore

(gallery 1)

15,3m long  
4,9m wide  
2,2m high

natural light  
darkening available  
parquet floor

### **capacity:**

in rows: 74  
long tables: 48

## Galerie

(gallery 2)

15,7m long  
4,7m wide  
5,7m high

natural light  
darkening available  
parquet floor

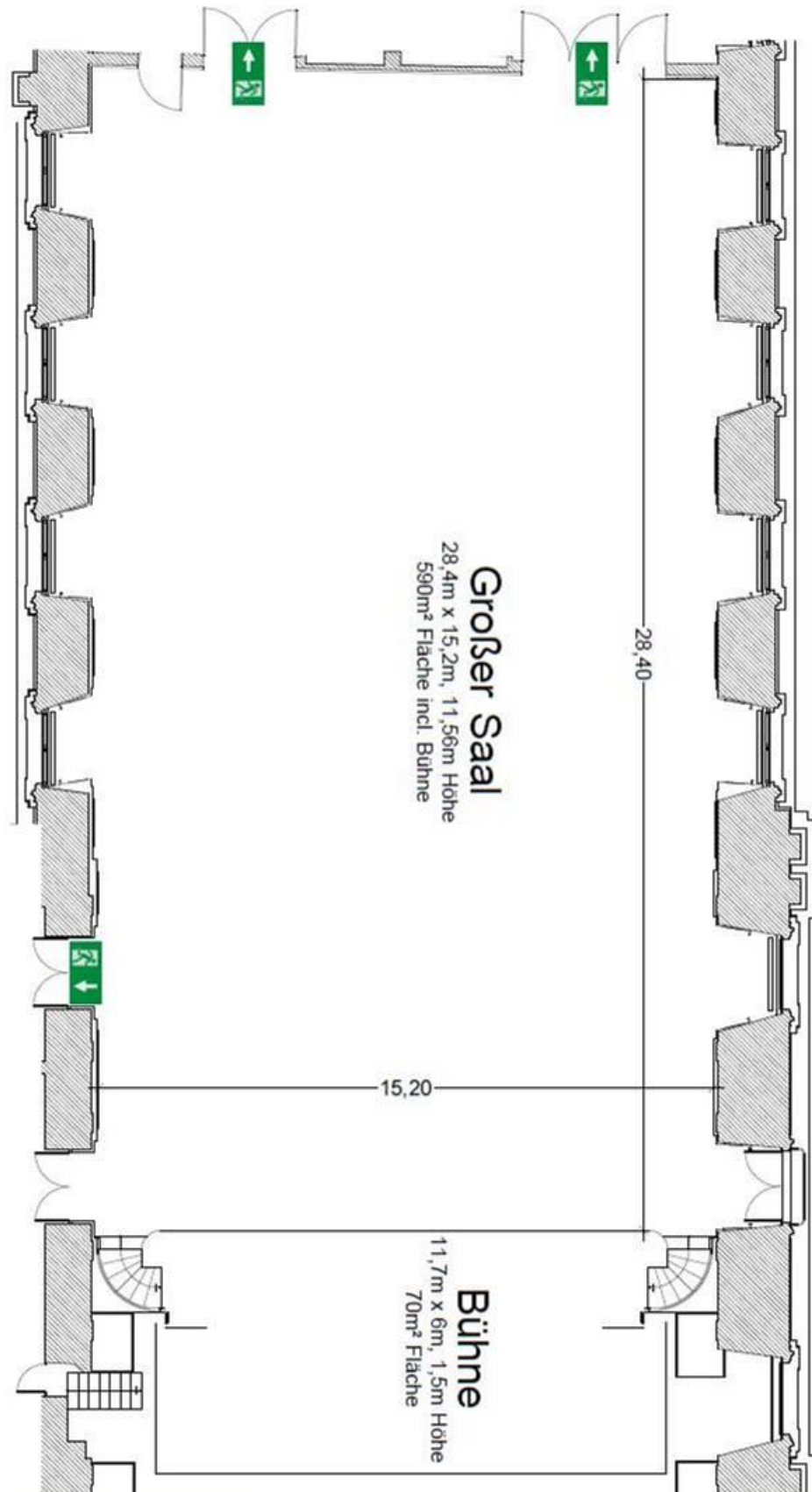
### **capacity:**

in rows: 118  
long tables: 40

- + broadband and wireless LAN
- + ISDN/Analog/Fax available
- + electric connection (electrical outlets and high-power currents available)
- + stage (11,5x6m, 1,5m high), added forestage (11,5x2,5m), curtain available
- + added rooms: stage room (7,9x 10,1, 5,4m hoch), 2 changing rooms (21m<sup>2</sup>, 13m<sup>2</sup>)



# Großer Saal (1st floor) Electoral Palace



# 2<sup>nd</sup> floor Electoral Palace



eventsplus  
MAINZ CONGRESS



## Forstersaal

412 m<sup>2</sup> surface area

24,2m long  
15,9m wide  
5,7m high

natural light  
darkening available  
parquet floor  
ventilation  
stage (5x7m) with curtain

### **capacity:**

in rows: 462  
classroom style: 216  
bankett style: 260

## Mozartsaal

190 m<sup>2</sup> surface area

14,1m long  
12,5m wide  
5,7m high

natural light  
darkening available  
parquet floor  
platform stage available

### **capacity:**

in rows: 176  
classroom style: 84  
bankett style: 120

### **Applies to both rooms:**

- + broadband and wireless LAN
- + ISDN/Analog/Fax available
- + electric and water connection available
- + light can be dimmed by chandelier

# 2<sup>nd</sup> floor Electoral Palace



eventsplus  
MAINZ CONGRESS

